

# LE LAC - PLAT 4, A PUD

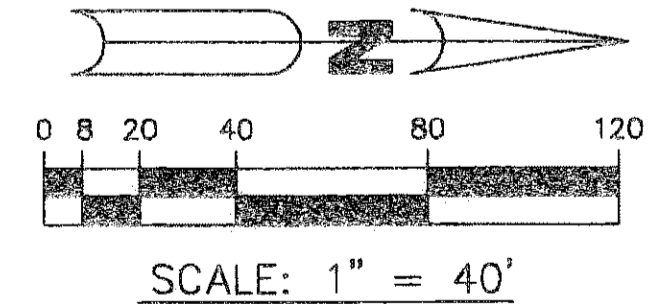
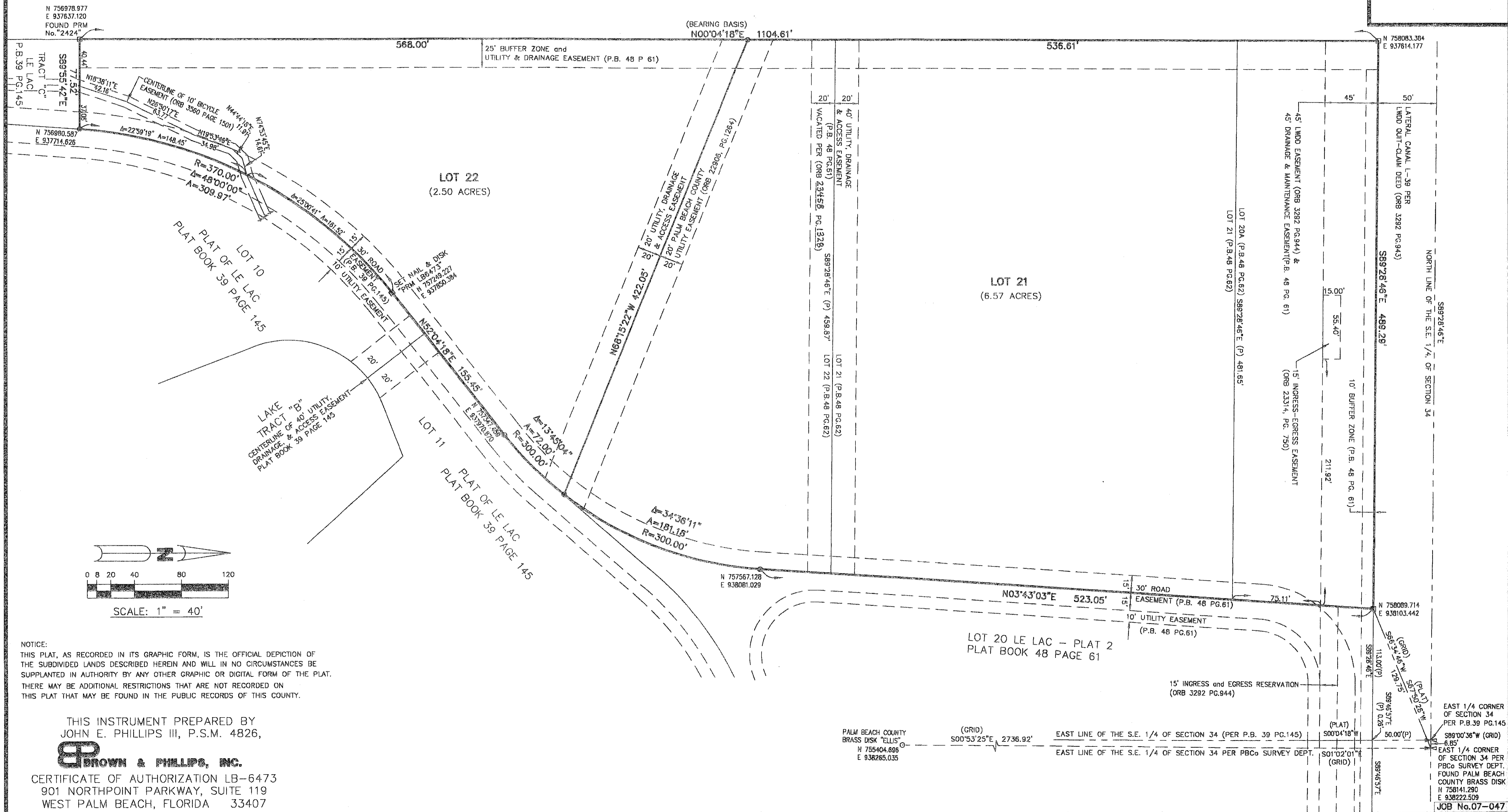
A REPLAT OF LOT 20A, 21, AND 22, LE LAC - PLAT 2, A PUD. PLAT BOOK 48, PAGE 61, OF THE PUBLIC RECORDS OF PALM BEACH COUNTY, FLORIDA, IN SECTION 34, TOWNSHIP 46 SOUTH, RANGE 42 EAST, PALM BEACH COUNTY, FLORIDA

NOVEMBER 2008

SHEET 2 OF 2

196

UNPLATTED



NOTICE:  
 THIS PLAT, AS RECORDED IN ITS GRAPHIC FORM, IS THE OFFICIAL DEPICTION OF THE SUBDIVIDED LANDS DESCRIBED HEREIN AND WILL IN NO CIRCUMSTANCES BE SUPPLANTED IN AUTHORITY BY ANY OTHER GRAPHIC OR DIGITAL FORM OF THE PLAT. THERE MAY BE ADDITIONAL RESTRICTIONS THAT ARE NOT RECORDED ON THIS PLAT THAT MAY BE FOUND IN THE PUBLIC RECORDS OF THIS COUNTY.

THIS INSTRUMENT PREPARED BY  
 JOHN E. PHILLIPS III, P.S.M. 4826,



**BROWN & PHILLIPS, INC.**  
 CERTIFICATE OF AUTHORIZATION LB-6473  
 901 NORTHPOINT PARKWAY, SUITE 119  
 WEST PALM BEACH, FLORIDA 33407

PALM BEACH COUNTY  
 BRASS DISK "ELLIS"  
 N 755404.606  
 E 938265.035

(GRID)  
 S00°53'25"E 2736.92'

EAST LINE OF THE S.E. 1/4 OF SECTION 34 (PER P.B. 39 PG.145)  
 EAST LINE OF THE S.E. 1/4 OF SECTION 34 PER PBCo SURVEY DEPT.

EAST 1/4 CORNER OF SECTION 34 PER P.B.39 PG.145  
 S89°00'36"W (GRID) 6.18'  
 EAST 1/4 CORNER OF SECTION 34 PER PBCo SURVEY DEPT. FOUND PALM BEACH COUNTY BRASS DISK  
 N 758141.290  
 E 938222.509  
 JOB No.07-047